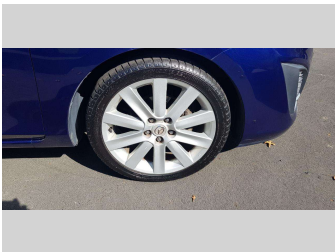
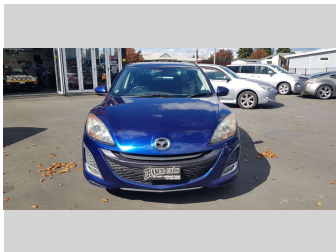
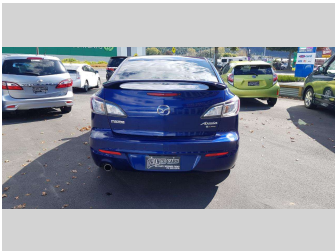


# 2009 Mazda Axela 20E



Purchase Price

Includes GST, Registration & Licensing

\$10,990

Indicative repayments

\$58.80 per week\*

Based on a 208 week term & 20% deposit.  
Total repayments (208) = \$14,429.03



Gain peace of mind with  
Mechanical Breakdown  
Insurance. **Ask us how.**



Top features

None Listed

Body Style

5 door, Sedan

Odometer

65,050 km

Engine

2000 cc, Camchain

Fuel Type

Petrol

Transmission

Automatic, 2WD

Wheels

Factory Alloys

VIN

7AT0C13JX24102929

Interior

Black, Cloth

Safety



Based on 2023 UCSR rating  
for 09-13 models

Reg No.

-

Ext Colour

Electric Blue Metallic

History

NZ New

Seats

5 seats, High grade cloth

CO2 Emissions

-

Energy Economy

☆☆☆☆☆☆

Annual fuel cost not available

Energy Consumption unknown.

Stock ID: 2401



Chance Cars | Phone 07 349 2376 | Email [accounts@mcstripes.co.nz](mailto:accounts@mcstripes.co.nz)  
45 Fairy Springs Road, Fairy Springs, Rotorua 3015, New Zealand  
[www.chancecars.co.nz](http://www.chancecars.co.nz)



★★★★★  
4.80 | 206 reviews

\* Chance Cars is not a lender nor a financial adviser. Any amounts displayed should not be seen as an offer of finance or taken as financial advice. The interest rate, fees and loan term used in this calculation may not actually represent those available from lenders. Actual interest rates, fees and loan terms will vary per lender and are typically based on an assessment of your credit risk and responsible lending criteria. Any repayment amounts displayed are indicative only and have been calculated using several other indicative inputs. The interest rate used in this calculation is an arbitrary 14.95%, however exact interest rates vary per lender. The term of the loan used in this calculation is 208 week. Exact terms available vary per lender although options typically include 6, 12, 18, 24, 36, 48 and 60 months. This calculation also includes two typical mandatory fees charged by lenders. These are an account admin fee of \$1.50 per month (other payment frequencies may be available) and a one-off establishment fee of \$350.00. Typically, this fee can be paid upfront or, as in this calculation, be capitalised over the contract term, ie. included in the loan amount. These fees can vary per lender and other non-mandatory fees and charges may also apply. The total amount of repayments has been calculated by multiplying 208 weekly repayments (based on a 208 week term) by the weekly repayment amount of \$58.80 which equals \$14,429.03. This calculator does not consider any of your own personal circumstances and we strongly suggest you seek budgeting advice prior to committing to any loan contract. Responsible lending criteria and lender terms and conditions will likely apply to any finalised loan contract. Proof of security and/or vehicle insurance may also be required before proceeding.