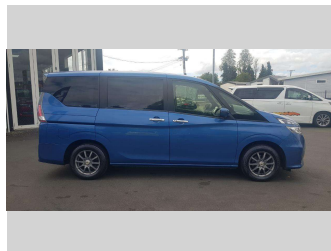



2018 Nissan Serena 20 S




Purchase Price **\$16,990**
Includes GST, Registration & Licensing


Indicative repayments
\$89.50 per week*
Based on a 208 week term & 20% deposit.
Total repayments (208) = **\$22,013.13**



Gain peace of mind with
Mechanical Breakdown Insurance. Ask us how.




Top features
None Listed

Body Style	5 door, Van	Reg No.	-
Odometer	134,700 km	Ext Colour	Blue Metallic
Engine	2000 cc, Camchain	History	-
Fuel Type	Petrol	Seats	8 seats, High grade cloth
Transmission	Automatic, 2WD	CO2 Emissions	★★★★☆ 175 grams/km
Wheels	Alloy Wheels	Energy Economy	★★☆☆☆ Annual fuel cost of \$2,940 7.5L per 100km
VIN	-	Cost per year is an estimate based on petrol price of \$2.80 per litre and an average distance of 14000 km. Emissions and Energy Economy figures standardised to 3P WLTP.	
Interior	Dark Grey, Cloth	Stock ID: 2387	
Safety	 Based on 2023 VSRR rating		



Chance Cars | Phone 07 349 2376 | Email accounts@mcstripes.co.nz
45 Fairy Springs Road, Fairy Springs, Rotorua 3015, New Zealand
www.chancecars.co.nz

★★★★★
4.80 | 205 reviews

* Chance Cars is not a lender nor a financial adviser. Any amounts displayed should not be seen as an offer of finance or taken as financial advice. The interest rate, fees and loan term used in this calculation may not actually represent those available from lenders. Actual interest rates, fees and loan terms will vary per lender and are typically based on an assessment of your credit risk and responsible lending criteria. Any repayment amounts displayed are indicative only and have been calculated using several other indicative inputs. The interest rate used in this calculation is an arbitrary 14.95%, however exact interest rates vary per lender. The term of the loan used in this calculation is 208 week. Exact terms available vary per lender although options typically include 6, 12, 18, 24, 36, 48 and 60 months. This calculation also includes two typical mandatory fees charged by lenders. These are an account admin fee of \$1.50 per month (other payment frequencies may be available) and a one-off establishment fee of \$350.00. Typically, this fee can be paid upfront or, as in this calculation, be capitalised over the contract term, ie. included in the loan amount. These fees can vary per lender and other non-mandatory fees and charges may also apply. The total amount of repayments has been calculated by multiplying 208 weekly repayments (based on a 208 week term) by the weekly repayment amount of \$89.50 which equals \$22,013.13. This calculator does not consider any of your own personal circumstances and we strongly suggest you seek budgeting advice prior to committing to any loan contract. Responsible lending criteria and lender terms and conditions will likely apply to any finalised loan contract. Proof of security and/or vehicle insurance may also be required before proceeding.